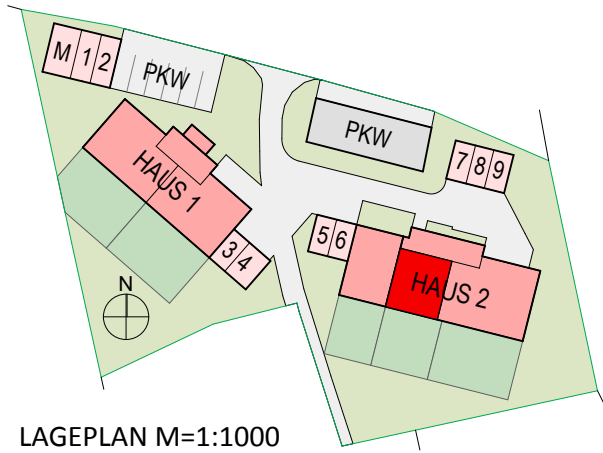


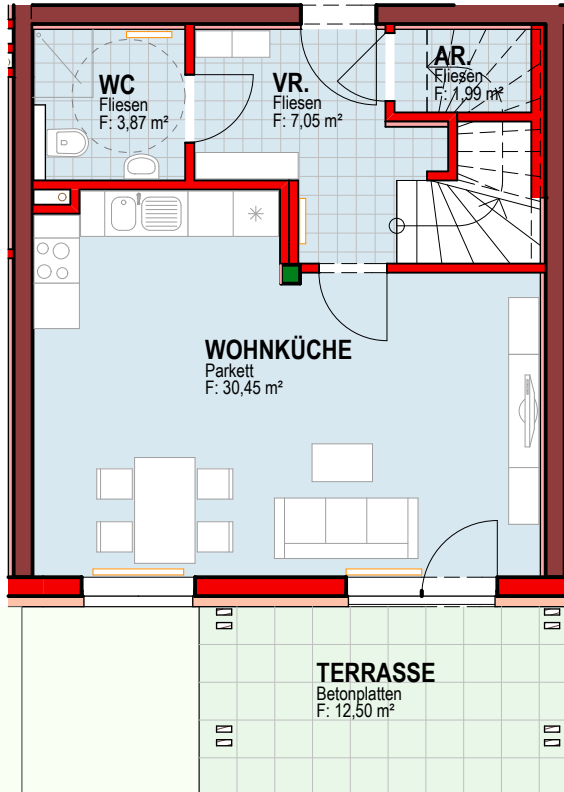
HAUS 2/TOP 6 - ERDGESCHOSS/1.OG



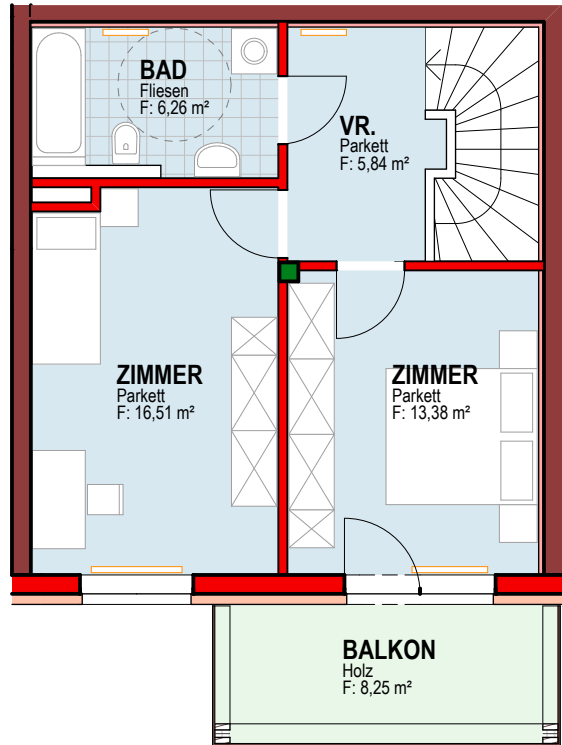
LAGEPLAN M=1:1000

VR.	7,05
AR.	1,99
WOHNKÜCHE	30,45
WC	3,87
VR.	5,84
ZIMMER	13,38
ZIMMER	16,51
BAD	6,26
85,35 m²	
TERRASSE	12,50
GARTEN	49,24
BALKON	8,25
KELLER	8,79

ERDGESCHOSS



1.OBERGESCHOSS



M=1:100



Arch. DI Rudi Raß
Ing. Michael Fleischhacker
Glacisstraße 59
8010 Graz

T +43 (316) 832444 0
F +43 (316) 832444 13
E architektur@kfr.at
W www.kfr.at

Wohnbau 9WE ILZ projekt

HAUS 2/TOP 6 - ERDGESCHOSS/1.OG inhalt

datum	22.03.2012	b1a	06
projekt / plan nr.	478.700.0		